

INSTALLATION MANUAL



MADE IN CANADA

DISCLAIMER

GreenLane Accessories is a division of Western Edison Manufacturing Corp. All of our products are designed for off-road use. Modify your vehicle at your own risk. By choosing to use our products you take full responsibility and liability for any resulting damages to persons or property. Designs are subject to change without notice. Your safety, and the safety of others is very important. CARELESS INSTALLATION AND OPERATION CAN RESULT IN SERIOUS INJURY OR EQUIPMENT DAMAGE. READ AND UNDERSTAND ALL SAFETY PRECAUTIONS AND OPERATING INSTRUCTIONS BEFORE INSTALLING AND OPERATING THIS PRODUCT.

PROPRIETARY AND CONFIDENTIAL

THE INFORMATION CONTAINED IN THIS DRAWING IS THE SOLE PROPERTY OF WESTERN EDISON MANUFACTURING CORP. ANY REPRODUCTION IN PART OR AS A WHOLE WITHOUT THE WRITTEN PERMISSION OF WESTERN EDISON MANUFACTURING CORP IS PROHIBITED.

DESCRIPTION:

**TACOMA DOUBLE CAB
(4DOOR) ROOF RACK**

COMPATIBLE WITH:

**2016+ TOYOTA TACOMA
(DOUBLE CAB)**

DATE UPDATED:

JULY 2021



TACOMA DOUBLE CAB (4DR) ROOF RACK INSTALLATION

APPLICATION: 2016+ TACOMA DOUBLE CAB/4DOOR

PARTS LIST	
DOUBLE SLOT 8020 BARS	3
SINGLE SLOT 8020 BAR	1
FRONT GUTTER BLOCK	2
MIDDLE GUTTER BLOCK	2
REAR GUTTER BLOCK	2
AIR DAM	1
LONG SIDE RAILS LH,RH	2
M6-1.0 x 30mm SS SOCKET CAP SCREW	10
M6 x 12mm SS FLAT WASHER	10
5/16-18 x 1" BLACK-SS BUTTON HEAD BOLT	4
BLACK SS 5/16 x 3/4 BUTTON HEAD BOLT	16
BLACK SS 5/16 x 5/8 BUTTON HEAD BOLT	4
5/16 T-SLOT NUTS	4
SS 3/8 x 1 BUTTON HEAD BOLTS	10
SS 3/8 WASHER	10
BLACK SS 5/16 WASHER	24
BLACK SS 5/16 NYLOCK NUT	4

TOOLS REQUIRED
METRIC / STANDARD ALLEN KEYS
1/2 WRENCH
CLEAR SILICONE
TAPE MEASURE
GREASE / BLUE LOCTITE
TIN SNIPS

TORQUE SPECS		
THREAD SIZE	HEX BOLT HEAD	TORQUE
6mm	10mm	8 ft/lb
8mm	12 or 13 mm	18 ft/lb
10mm	17mm	23 ft/lb
12mm	19mm	50 ft/lb
14mm	22mm	90 ft/lb
1/4 in	7/16 in	12 ft/lb
5/16 in	1/2 in	19 ft/lb
3/8 in	9/16 in	23 ft/lb
1/2 in	3/4 in	90 ft/lb

1. Remove weather stripping to expose gutters. *{Image 1 shows vehicle with stripping removed}*



Image 1

2. Locate and remove plastic cover strip to expose factory mount points (3 places per side).



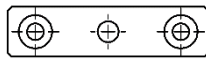
Image 2

3. Apply silicon to gutter blocks as shown in *Image 3*.



Image 3

4. Install gutter blocks using supplied (x10) 6mm Allen-head bolts with washers and tighten until snug. {Front: *Images 4 & 7*. Middle: *Images 5 & 8*. Rear: *Images 6 & 9*.}



FRONT GUTTER BLOCK

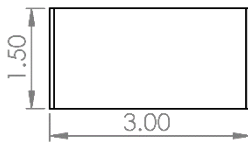
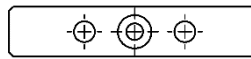


Image 4



MIDDLE GUTTER BLOCK

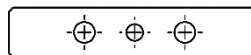
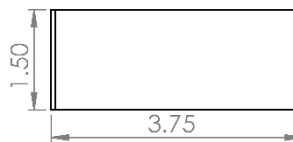
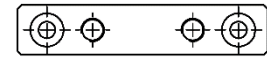


Image 5



REAR GUTTER BLOCK

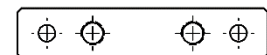
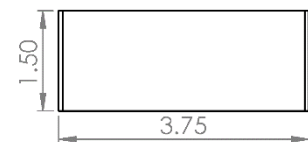


Image 6

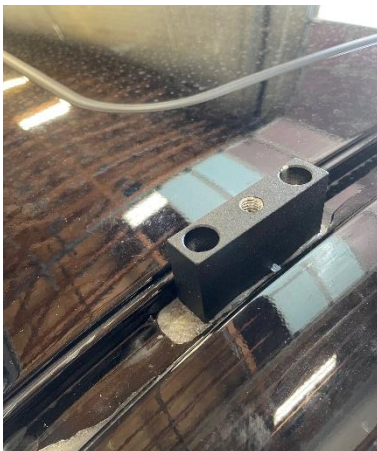


Image 7



Image 8



Image 9

5. Measure and trim the factory rubber gutter strip to fit around gutter blocks. Use a small amount of silicon when reinstalling.



Image 10

6. Install side rails using supplied (x10) 3/8 button head bolts with washers (raw stainless), leave these bolts loose. *{Image 11 shows bolts tight. Leave loose until Step 10}*

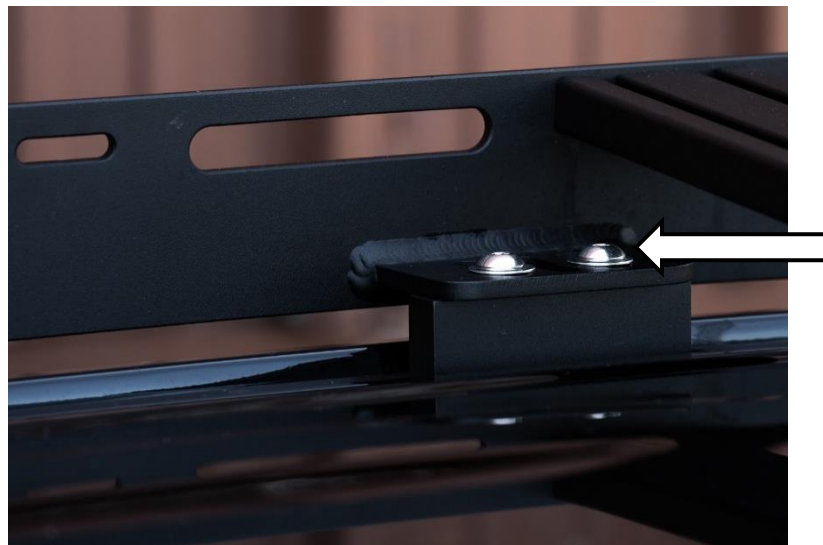


Image 11

7. Install four T-nuts into front channel of front crossbar (these will be used to attach the air dam).

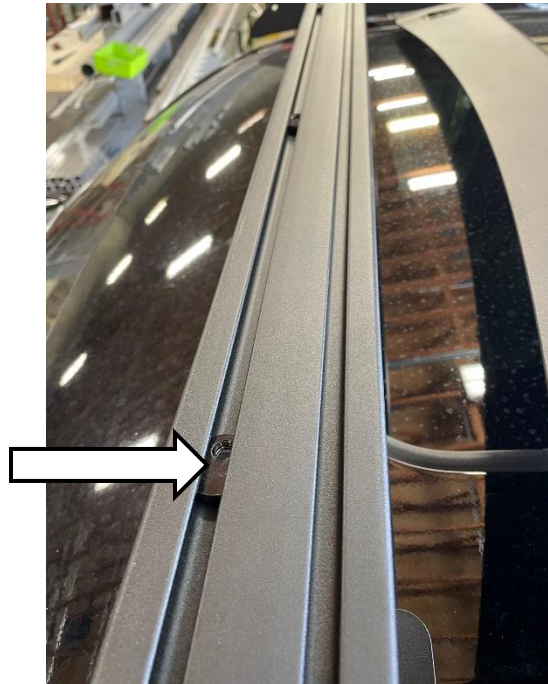


Image 12

8. Install remaining crossbars loosely using 3/4" long black stainless 5/16 button head bolts and black plastic washers, shown in *Image 13*. The single slot crossbar will be placed at the rear of the rack either horizontally or vertically as shown in *Image 14*.



Image 13



Image 14

9. Install air dam using (x4) 5/8" long black stainless 5/16 button head bolts and black plastic washers along the top, and (x4) 1" long black stainless 5/16 button head bolts on the sides with no washer on the outside and stainless washer and nylock nut on the inside.

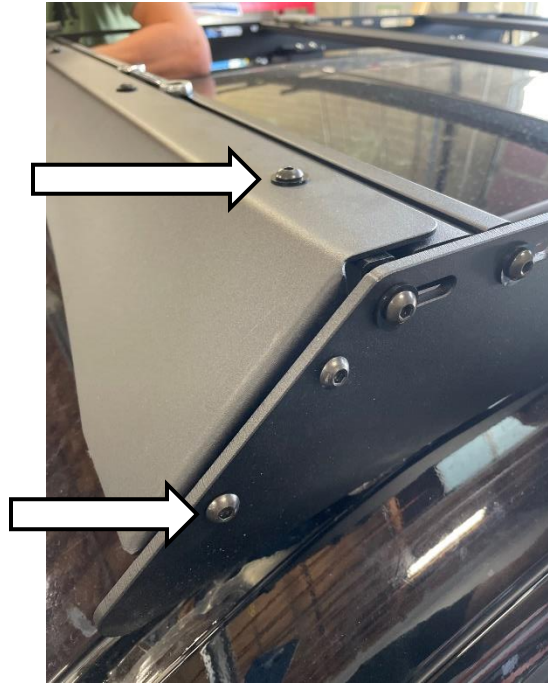


Image 15

10. Center the roof rack on the truck and tighten all black stainless hardware followed by the (x10) 3/8 silver bolts fastening the rack to the gutter blocks.

INSTALLATION COMPLETE

