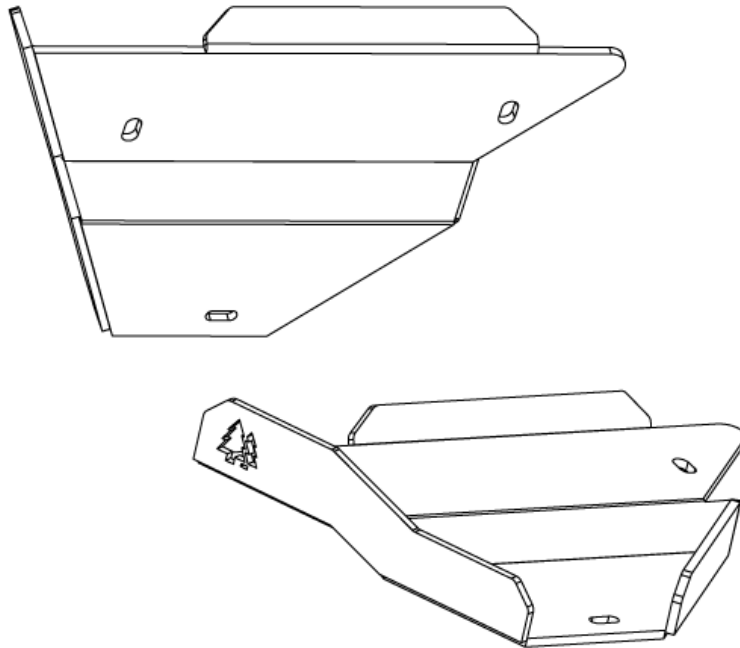




TACOMA LOWER CONTROL ARM SKID PLATE

INSTALLATION INSTRUCTIONS

APPLICATION: 2016+ TOYOTA TACOMA



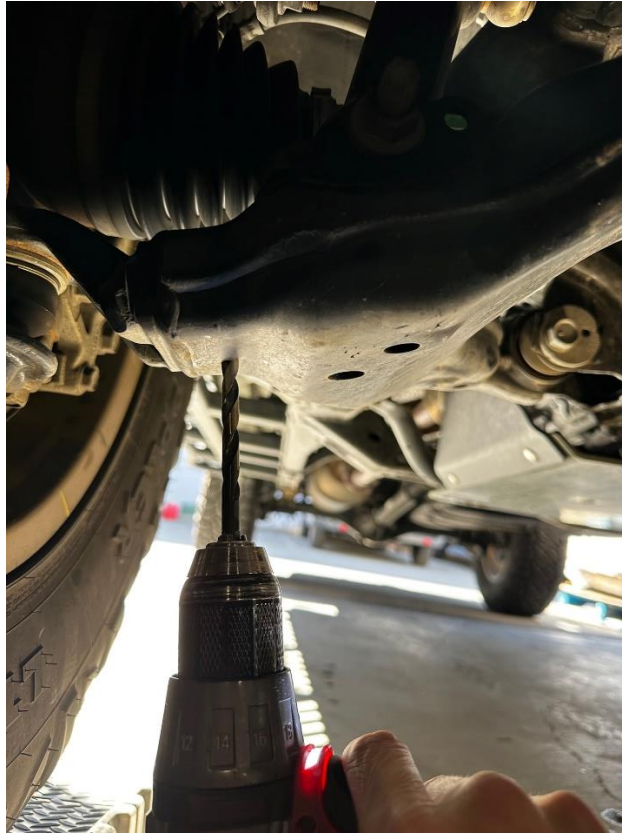
PARTS LIST	
TACOMA CONTROL ARM SKID PLATES	2
3/8" SPACERS	6
4" LONG 3/8" BOLT	2
3" LONG 3/8" BOLT	2
X" LONG 5/16" BOLT	2
3/8" WASHER	4
5/16" WASHER	2
3/8" NYLON-INSERT LOCKNUT	4
5/16" NYLON-INSERT LOCKNUT	2

TOOLS REQUIRED
1/2" WRENCH
9/16" WRENCH
3/16" ALLEN KEY
7/32" ALLEN KEY
ANTI-SEIZE/GREASE

TORQUE SPECS		
THREAD SIZE	BOLT HEAD SIZE	TORQUE
6mm	10mm	8 ft/lb
8mm	12 or 13 mm	18 ft/lb
10mm	17mm	23 ft/lb
12mm	19mm	50 ft/lb
14mm	22mm	90 ft/lb
1/4 in	7/16 in	12 ft/lb
5/16 in	1/2 in	19 ft/lb
3/8 in	9/16 in	23 ft/lb
1/2 in	3/4 in	90 ft/lb

Installation Instructions

1. Apply anti-seize to the 3 bolts supplied with the control arm skid plates.
2. Chase the outer-most hole in the control arm with a 5/16" drill bit. Rust, dirt, and debris can gather here making it difficult to install the bolt.



3. Gather a control arm skid plate and half of the supplied hardware. Passenger side shown.



- Starting with the 3" long 3/8" bolt, install it upwards into the front hole (closest to front bumper), with a 3/8" spacer between the skid plate and the control arm. Loosely install the washer and nylock nut on top of the control arm.



- Next install the smaller 5/16" bolt in the smaller hole closest to the wheel, with a 3/8" spacer between the skid plate and the control arm. Again, loosely install the washer and nylock nut on top of the control arm.



6. Lastly, install the 4" long 3/8" bolt through the rear-most hole in the control arm skid plate with a 3/8" washer between the skid plate and the control arm. Loosely install the washer and nylon locknut on top of the control arm.
7. With each of the 3 bolts installed, tighten the bolts evenly until each is hand-tight, and the control arm skid plate is fixed in position.
8. Torque the two 3/8" bolts to 100 in-lb (8.3 ft-lb) and torque the 5/16" bolt to 90 in-lb (7.5 ft-lb).
9. Repeat the same process for the opposite side.

INSTALL COMPLETE