

INSTALLATION MANUAL



MADE IN CANADA

DISCLAIMER

GreenLane Accessories is a division of Western Edison Manufacturing Corp. All of our products are designed for off-road use. Modify your vehicle at your own risk. By choosing to use our products you take full responsibility and liability for any resulting damages to persons or property. Designs are subject to change without notice. Your safety, and the safety of others is very important. CARELESS INSTALLATION AND OPERATION CAN RESULT IN SERIOUS INJURY OR EQUIPMENT DAMAGE. READ AND UNDERSTAND ALL SAFETY PRECAUTIONS AND OPERATING INSTRUCTIONS BEFORE INSTALLING AND OPERATING THIS PRODUCT.

PROPRIETARY AND CONFIDENTIAL

THE INFORMATION CONTAINED IN THIS DRAWING IS THE SOLE PROPERTY OF WESTERN EDISON MANUFACTURING CORP. ANY REPRODUCTION IN PART OR AS A WHOLE WITHOUT THE WRITTEN PERMISSION OF WESTERN EDISON MANUFACTURING CORP IS PROHIBITED.

DESCRIPTION:

**TACOMA ACCESS CAB
ROOF RACK**

COMPATIBLE WITH:

**2016+ TOYOTA TACOMA
(ACCESS CAB)**

DATE UPDATED:

JULY 2021



TACOMA ACCESS CAB (2DR) ROOF RACK INSTALLATION

APPLICATION: 2016+ TACOMA ACCESS CAB/2DOOR

PARTS LIST	
DOUBLE SLOT 8020 BARS	2
SINGLE SLOT 8020 BAR	1
FRONT GUTTER BLOCK	2
REAR GUTTER BLOCK	2
AIR DAM	1
ACCESS CAB SIDE RAILS (LH & RH)	2
1/4"-20 x 1-1/4 18-8 SS SOCKET CAP SCREW	8
1/4" SS FLAT WASHER	8
5/16-18 x 1" BLACK-SS BUTTON HEAD BOLT	4
BLACK SS 5/16 x 3/4 BUTTON HEAD BOLT	12
BLACK SS 5/16 x 5/8 BUTTON HEAD BOLT	4
5/16 T-SLOT NUTS	8
SS 3/8 x 1 BUTTON HEAD BOLTS	6
SS 3/8 WASHER	6
BLACK SS 5/16 WASHER	20
BLACK SS 5/16 NYLOCK NUT	4
1/4-20 .027-.165 Large Flange Ribbed Nutsert Aluminum	8

TOOLS REQUIRED
METRIC / STANDARD ALLEN KEYS
9/16 WRENCH
CLEAR SILICONE
TAPE MEASURE
GREASE / BLUE LOCTITE
TIN SNIPS/GRINDER WITH CUT-OFF WHEEL
NUTSERT INSTALLATION TOOL
DRILL & DRILL BITS
1/4" TRANSFER PUNCH

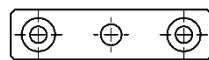
TORQUE SPECS		
THREAD SIZE	HEX BOLT HEAD	TORQUE
6mm	10mm	8 ft/lb
8mm	12 or 13 mm	18 ft/lb
10mm	17mm	23 ft/lb
12mm	19mm	50 ft/lb
14mm	22mm	90 ft/lb
1/4 in	7/16 in	12 ft/lb
5/16 in	1/2 in	19 ft/lb
3/8 in	9/16 in	23 ft/lb
1/2 in	3/4 in	90 ft/lb

1. Remove weather stripping to expose gutters. *{Image 1 shows vehicle with stripping removed}*



Image 1

2. Identify front and rear gutter blocks. {Front: Images 2 & 4. Rear: Images 3 & 5.}



FRONT GUTTER BLOCK

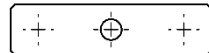
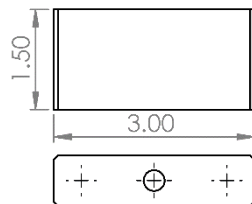
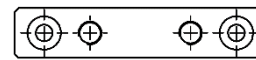


Image 2



REAR GUTTER BLOCK

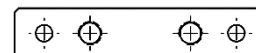
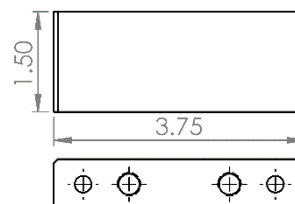


Image 3



Image 4



Image 5

3. Place rear gutter block at rear of cab, against existing rubber weather stripping.



Image 6

4. Using 1/4" transfer punch, mark two drill locations (two holes on the left and two holes on the right).



Image 7

5. Drill the holes starting with the 1/8" drill bit and working up. Be careful not to drill deeper than 1/2" into the roof.

6. Install four nutserts as shown in *Image 8* (2 per side).



Image 8

7. Apply silicon to the bottom of the rear gutter blocks and install using the 1/4" socket head cap screws.



Image 9

8. Loosely bolt the front gutter blocks to the roof rack sides using the 3/8" button head bolts (1 per side).

9. Bolt rack side to rear gutter block and mark location of front gutter block in the roof gutter.
(*Image 10 shows side rails bolted to rear gutter block*)



Image 10

10. Remove front gutter block from side panel, and place in previously marked position. Center punch, drill and install nutserts for front gutter blocks. **(Refer to Steps 5 & 6)**
11. Apply silicon to bottom of front gutter blocks and bolt to roof.
12. Measure and trim the factory rubber gutter strip to fit around gutter blocks. Use a small amount of silicon when reinstalling.



Image 11

13. Install side rails using supplied (x6) 3/8 button head bolts with washers (raw stainless), leave these bolts loose. *{Image 12 shows front block with bolts tight. Leave loose until Step 17}*

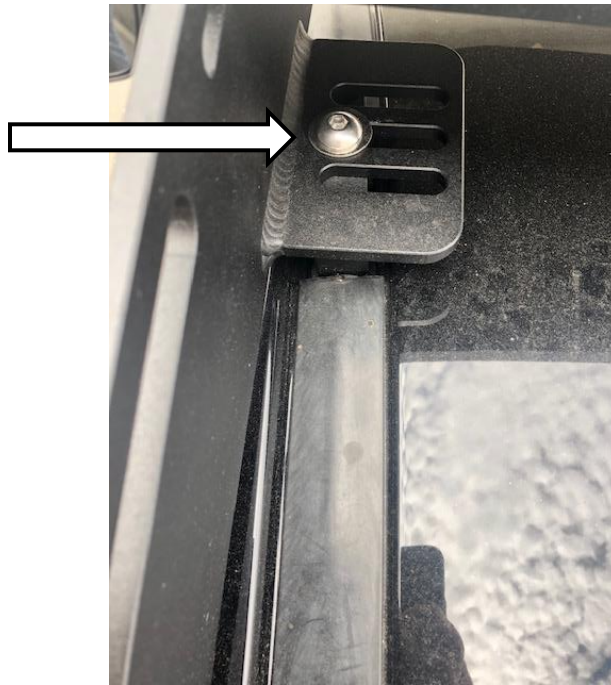


Image 12

14. Install four T-nuts into front channel of front crossbar (these will be used to attach the air dam).



Image 13

15. Install remaining crossbars loosely using 3/4" long black stainless 5/16 button head bolts and black plastic washers, shown in *Image 14*. The single slot crossbar will be placed at the rear of the rack either horizontally or vertically as shown in *Image 15*.



Image 14



Image 15

16. Install air dam using (x4) 5/8" long black stainless 5/16 button head bolts and black plastic washers along the top, and (x4) 1" long black stainless 5/16 button head bolts on the sides with no washer on the outside and stainless washer and nylock nut on the inside.

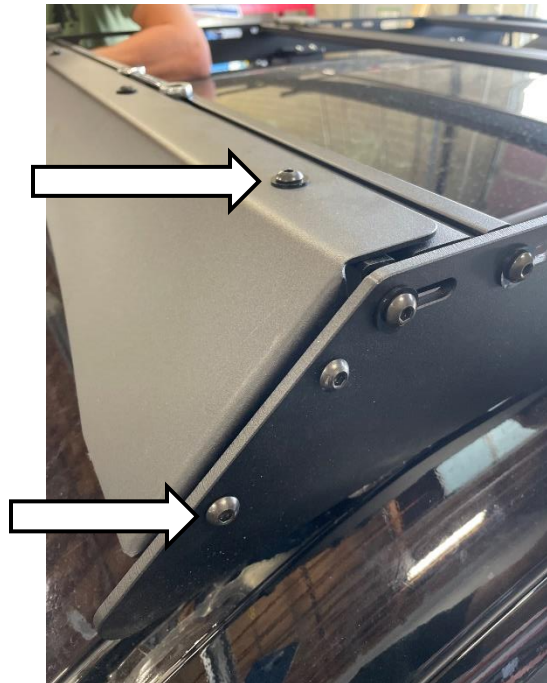


Image 16

17. Center the roof rack on the truck and tighten all black stainless hardware followed by the (x6) 3/8 silver bolts fastening the rack to the gutter blocks.

INSTALLATION COMPLETE

