

## INSTALLATION MANUAL



MADE IN CANADA

#### DISCLAIMER

GreenLane Accessories is a division of Western Edison Manufacturing Corp. All of our products are designed for off-road use. Modify your vehicle at your own risk. By choosing to use our products you take full responsibility and liability for any resulting damages to persons or property. Designs are subject to change without notice. Your safety, and the safety of others is very important. CARELESS INSTALLATION AND OPERATION CAN RESULT IN SERIOUS INJURY OR EQUIPMENT DAMAGE. READ AND UNDERSTAND ALL SAFETY PRECAUTIONS AND OPERATING INSTRUCTIONS BEFORE INSTALLING AND OPERATING THIS PRODUCT.

#### PROPRIETARY AND CONFIDENTIAL

THE INFORMATION CONTAINED IN THIS DRAWING IS THE SOLE PROPERTY OF WESTERN EDISON MANUFACTURING CORP. ANY REPRODUCTION IN PART OR AS A WHOLE WITHOUT THE WRITTEN PERMISSION OF WESTERN EDISON MANUFACTURING CORP IS PROHIBITED.

#### DESCRIPTION:

**3rd GEN TACOMA  
MODULAR BUMPER**

#### COMPATIBLE WITH:

**2016+ TOYOTA TACOMA**

#### DATE UPDATED:

**JULY 2021**



# **TACOMA MODULAR BUMPER INSTALLATION**

**APPLICATION: 2016+ TOYOTA TACOMA**

<b>PARTS LIST</b>	
STUMP BUMPER	1
5/16"-18 x 1-1/4" BOLT	4
5/16" WASHER	8
5/16"-18 NUT	4
3/8" -16 x 1-1/4" BOLT	2
3/8" WASHER	4
3/8"-16 NUT	2
3/8" WASHER	12
3/8"-16 BOLT (Black)	6
3/8"-16 x 1-1/4" NUT (Black)	6
3/8" - 16 x 1-3/4" BOLT	2
5/16" FENDER WASHER	4
Edge Seal	2

<b>TOOLS REQUIRED</b>
STANDARD / METRIC SOCKETS AND WRENCHES
FLAT HEAD SCREWDRIVER
ROTARY CUT OFF SAW FOR BUMPER TRIMMING
SANDER/DREMEL
MASKING TAPE
TAPE MEASURE
ANTI SEIZE / GREASE FOR HARDWARE

TORQUE SPECS		
THREAD SIZE	HEX BOLT HEAD	TORQUE
6mm	10mm	8 ft/lb
8mm	12 or 13 mm	18 ft/lb
10mm	17mm	23 ft/lb
12mm	19mm	50 ft/lb
14mm	22mm	90 ft/lb
1/4 in	7/16 in	12 ft/lb
5/16 in	1/2 in	19 ft/lb
3/8 in	9/16 in	23 ft/lb
1/2 in	3/4 in	90 ft/lb

1. Remove license plate and plate mount if applicable.
2. Remove grill assembly to gain more access. Remove two 10mm bolts and two push clips and pull grill forwards to release lower clips.



*Image 1*



*Image 2*



*Image 1*

3. Unclip fender flares from bumper cover, ensuring not to break the clips holding the flare to the steel fender.



*Image 2*

4. Remove front lower plastic bumper cover and set aside. There are six clips, and eight 10mm bolts to remove.



*Image 5*



*Image 6*



*Image 7*

5. Remove Factory skid plate using a 12mm socket, (13mm if you have a diff drop already installed).



*Image 8*

6. Remove steel cross member ends {Image 9} which will not be reused, and factory tow hook {Image 10} using a 17mm socket. If equipped with the TRD tow hook, it can be re-installed after bumper is installed.



Image 9



Image 10

7. Remove fog lights, fog light surrounds, and bumper grille section. These will not be reused.

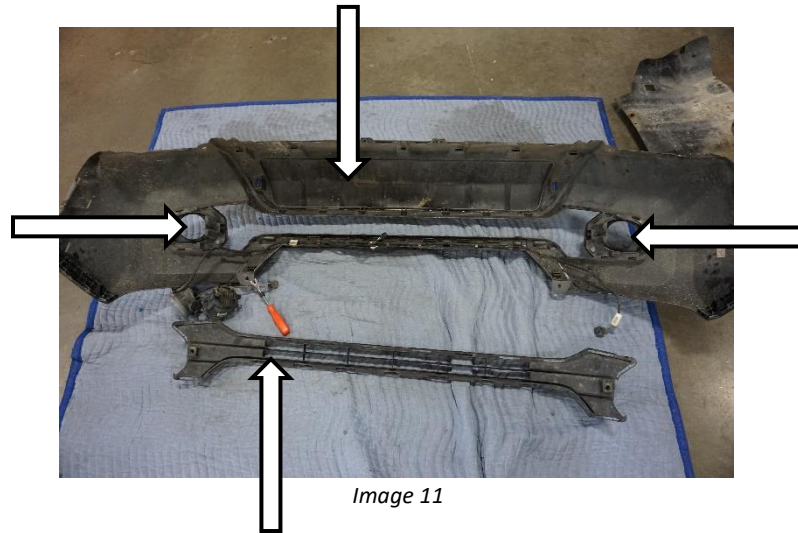
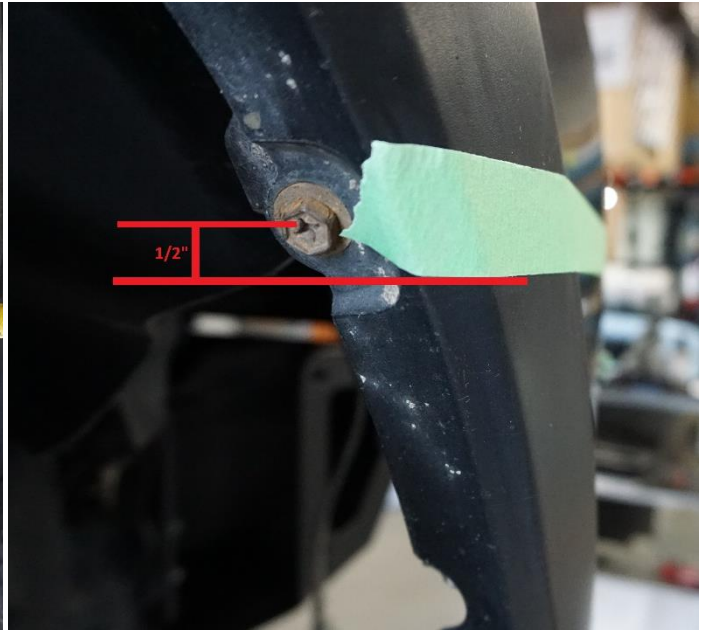


Image 11

8. Tape off fender to show final cut line and to protect the plastic while cutting. Create a straight tape line 1" below factory fog location (*Image 12*) and ½" below the fender flare fastening bolt (*Image 13*):

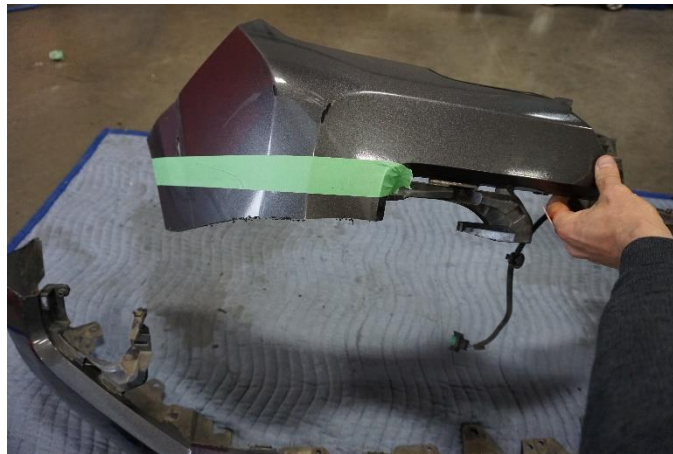


*Image 12*



*Image 13*

9. Trim lower part of the bumper cover away – this is just a rough cut located at least 3" below the tape line. The finished cutline will be 1" below indicated tape line.



*Image 14*

10. If your truck is equipped with a transmission cooler, it will be necessary to relocate it further back to make room for the winch. Remove the bolt located on the passenger frame rail that holds the cooler line in place; this will not be reused. Next unbolt both cooler line mounts from the front cross member and reinstall using supplied brackets with the longer bracket on the driver side.



Image 15



Image 16



Image 17

11. Reinstall trimmed bumper cover.



Image 18

12. Trim inner plastic fender following the body mount and drill a 5/16" hole on each side to secure the inner fender to the front cross member using supplied hardware.



Image 19



13. Re-install Grille in the opposite order of removal.
14. Cut plastic bumper and fender flare just short of final location and use an orbital sander with a fine disc to sand up to the finished line. Install the edge seal {Image 21} provided – you will have to trim the edge seal to fit using tin snips or side cutters.



Image 20

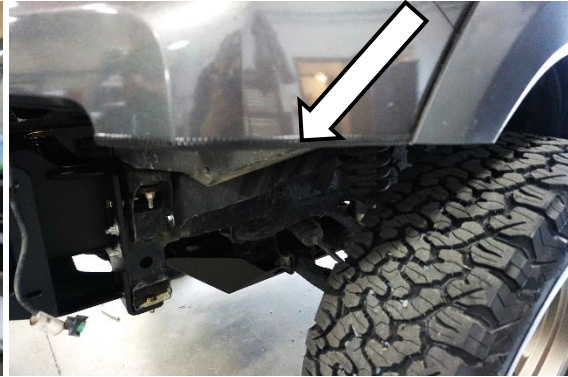


Image 21

15. Install winch into bumper if applicable.
16. Install bumper center section using 6 factory nuts (14mm) and 4 supplied 3/8 bolts as shown in Image 22. Install 1/2" spacers between the bumper and the frame on the top hole as shown in Image 23.

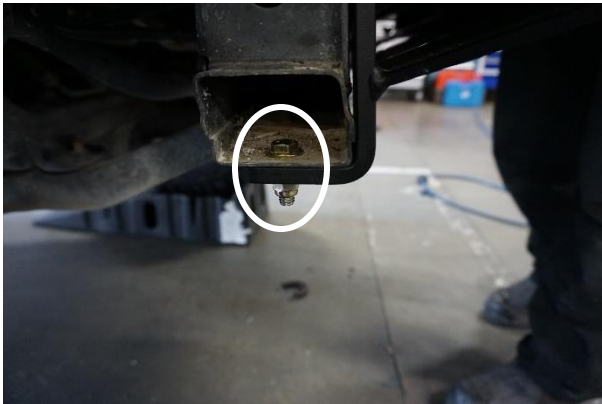


Image 22



Image 23

17. Install bumper wings and align them so you have an even gap between the plastic and top bar.



Image 24

18. Install aftermarket lighting if applicable.

**INSTALLATION COMPLETE**

