

INSTALLATION MANUAL



MADE IN CANADA

DISCLAIMER

GreenLane Accessories is a division of Western Edison Manufacturing Corp. All of our products are designed for off-road use. Modify your vehicle at your own risk. By choosing to use our products you take full responsibility and liability for any resulting damages to persons or property. Designs are subject to change without notice. Your safety, and the safety of others is very important. CARELESS INSTALLATION AND OPERATION CAN RESULT IN SERIOUS INJURY OR EQUIPMENT DAMAGE. READ AND UNDERSTAND ALL SAFETY PRECAUTIONS AND OPERATING INSTRUCTIONS BEFORE INSTALLING AND OPERATING THIS PRODUCT.

PROPRIETARY AND CONFIDENTIAL

THE INFORMATION CONTAINED IN THIS DRAWING IS THE SOLE PROPERTY OF WESTERN EDISON MANUFACTURING CORP. ANY REPRODUCTION IN PART OR AS A WHOLE WITHOUT THE WRITTEN PERMISSION OF WESTERN EDISON MANUFACTURING CORP IS PROHIBITED.

DESCRIPTION:

5th GEN 4RUNNER SIDE STEPS/SLIDERS

COMPATIBLE WITH:

**2010+ TOYOTA 4RUNNER
(PRO, TRAIL, SR5, OFFROAD)**

DATE UPDATED:

OCTOBER 2020



4RUNNER SIDE STEP/SLIDER INSTALLATION

APPLICATION: 2010+ 4RUNNER (KDSS & TRD MODELS)

PARTS LIST	
SIDE STEPS OR SLIDERS	1 SET (L&R)
8MM BOLTS	28
8MM WASHERS	28

TOOLS REQUIRED
FLAT HEAD SCREWDRIVER / SMALL PRY BAR
METRIC SOCKETS AND WRENCHES
M8 X 1.25 TAP (OPTIONAL– TO CLEAN OUT THREADS IN FRAME)

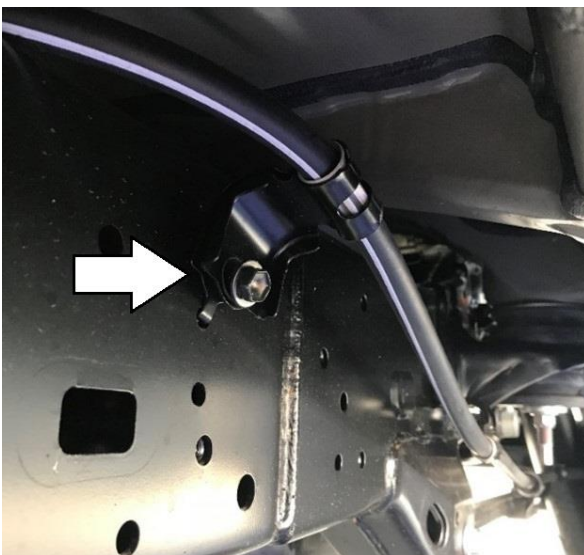
TORQUE SPECS		
THREAD SIZE	HEX BOLT HEAD	TORQUE
6mm	10mm	8 ft/lb
8mm	12 or 13 mm	18 ft/lb
10mm	17mm	23 ft/lb
12mm	19mm	50 ft/lb
14mm	22mm	90 ft/lb
1/4 in	7/16 in	12 ft/lb
5/16 in	1/2 in	19 ft/lb
3/8 in	9/16 in	23 ft/lb
1/2 in	3/4 in	90 ft/lb

Driver Side:

1. Remove factory running boards if applicable by removing 6 bolts using a 12mm socket.
2. Remove all round and rectangular plastic frame plugs by prying them out with a flat head screwdriver or prybar. These will not be reused.



3. Remove parking brake cable bracket from frame– this bracket will be reinstalled on top of the slider mount plate using new hardware.



ON KDSS SYSTEM

4. KDSS models only - remove the front cover plate and middle cover plate (two bolts each), and the two bolts holding the KDSS line. These will be reinstalled in Step 6.



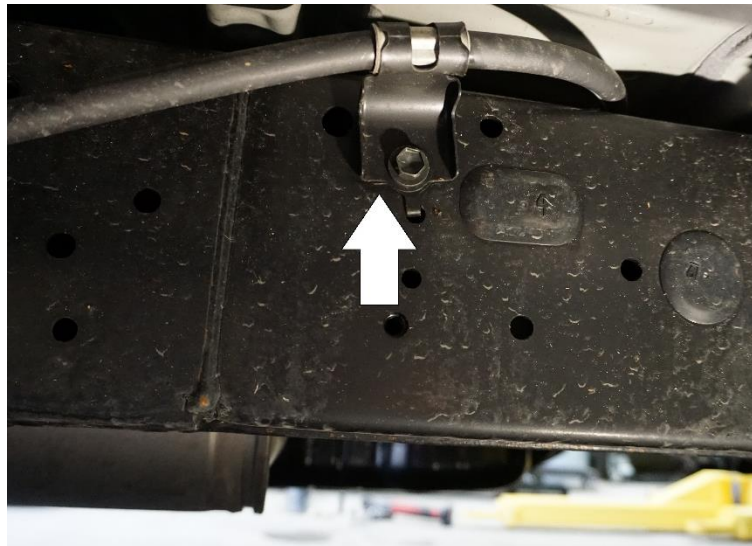
5. Clean out threaded frame holes using compressed air to remove dirt and rust. Threading the correct size tap (M8x1.25) through the holes prior to installation is recommended.
6. Install driver side (2-piece frame mount) 14 bolts using grease or never seize. The slider will slip between the lines and the frame, and under the KDSS lines if applicable. Install all bolts loosely first, then torque to 20-25ft/lbs. Secure the lines through the mounting plate using new supplied hardware. Re-install the cover plates using factory hardware.

Passenger Side:

1. Remove factory running boards if applicable by removing 6x 12mm head bolts.
2. Remove all round and rectangular plastic frame plugs by prying them out with a flat head screwdriver or prybar. These will not be reused.



3. Remove parking brake cable bracket from frame– this bracket will be reinstalled on top of the slider mount plate using new hardware in [Step 5](#).



4. Clean out and thread (M8 x 1.25) threaded frame holes as was done on driver side.
5. Install passenger side slider side (1-piece frame mount) with 14 bolts using grease or never seize. Install all bolts loosely first, then torque to 20-25ft/lbs.

INSTALLATION COMPLETE