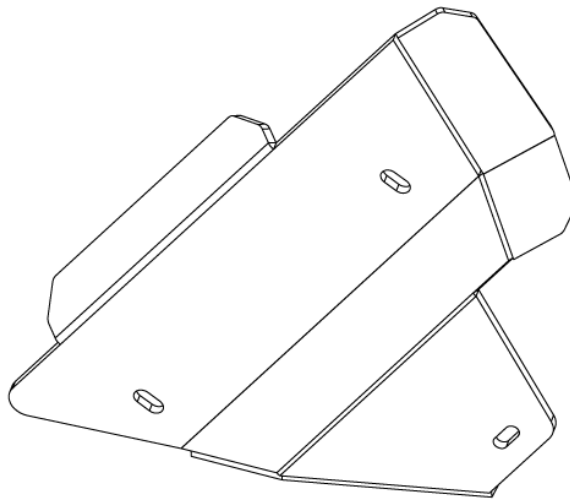




# **4RUNNER KDSS LOWER CONTROL ARM SKID** **PLATE INSTALLATION INSTRUCTIONS**

**APPLICATION: 2010+ KDSS EQUIPPED TOYOTA 4RUNNER**



<b>PARTS LIST</b>	
4RUNNER KDSS CONTROL ARM SKID PLATES	2
3/8" SPACERS	6
4.5" LONG 3/8" BOLT	2
4" LONG 3/8" BOLT	2
3.5" LONG 5/16" BOLT	2
3/8" WASHER	4
5/16" WASHER	4
3/8" NYLON-INSERT LOCKNUT	4
5/16" NYLON-INSERT LOCKNUT	2

## TOOLS REQUIRED

1/2" WRENCH
9/16" WRENCH
3/16" ALLEN KEY
7/32" ALLEN KEY
ANTI-SEIZE/GREASE

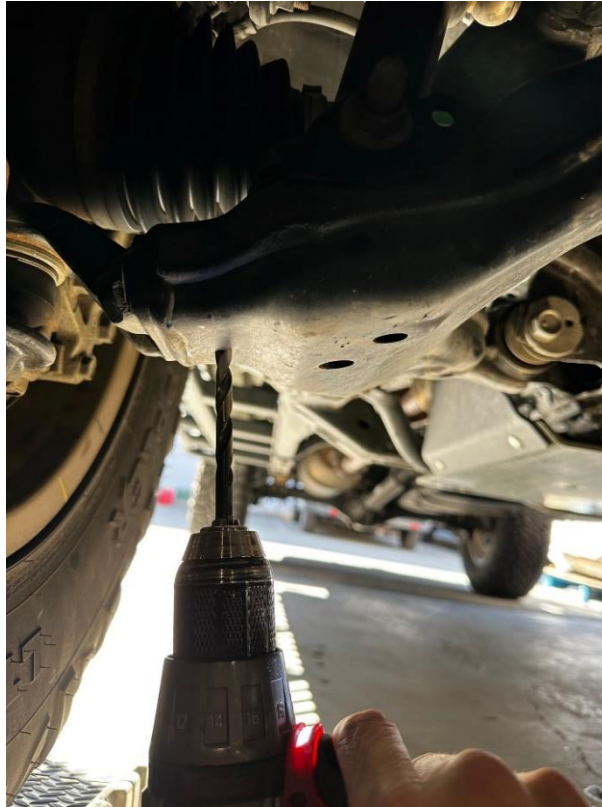
## GENERAL TORQUE SPECS

THREAD SIZE	BOLT HEAD SIZE	TORQUE
6mm	10mm	8 ft/lb
8mm	12 or 13 mm	18 ft/lb
10mm	17mm	23 ft/lb
12mm	19mm	50 ft/lb
14mm	22mm	90 ft/lb
1/4 in	7/16 in	12 ft/lb
5/16 in	1/2 in	19 ft/lb
3/8 in	9/16 in	23 ft/lb
1/2 in	3/4 in	90 ft/lb

## Installation Instructions

\*Passenger side shown\*

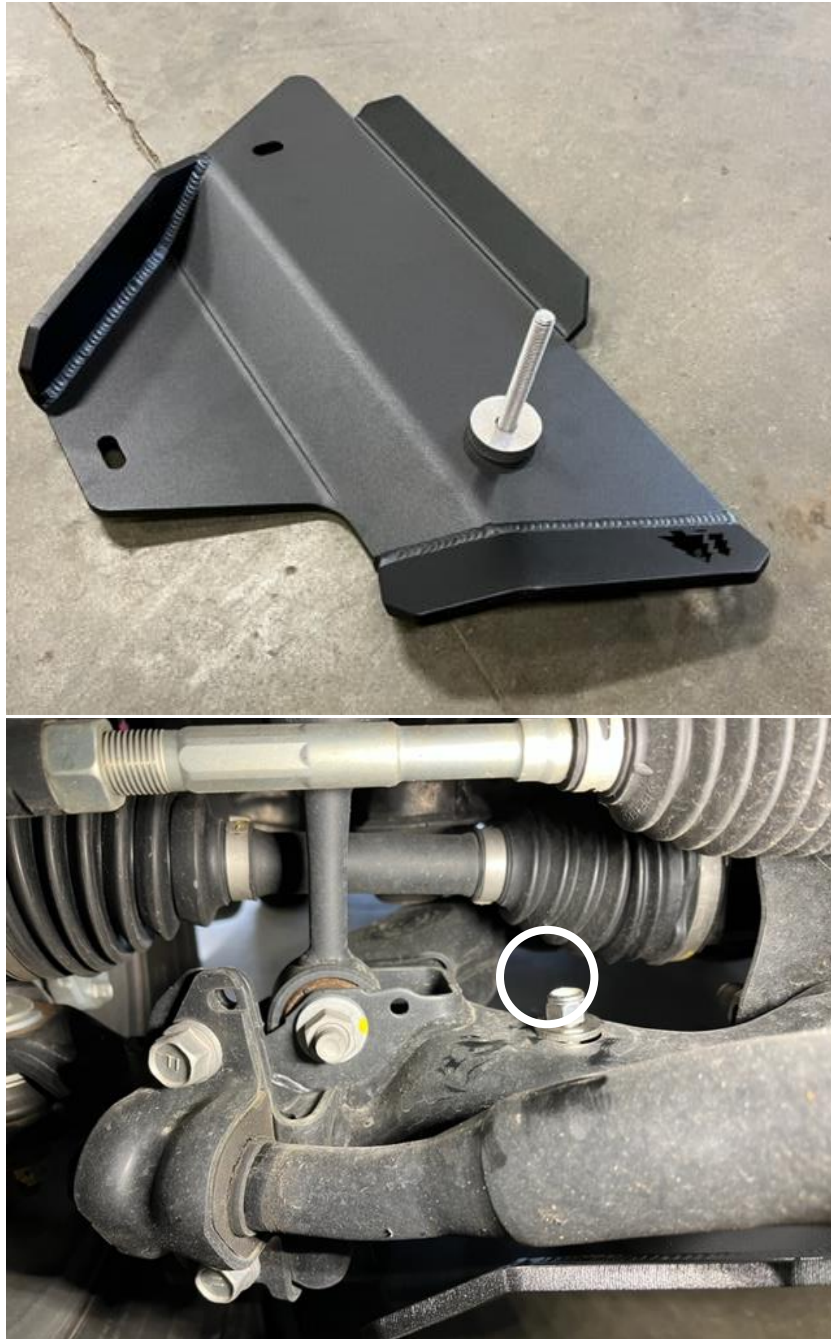
1. Apply anti-seize to all 6 of the bolts supplied with the control arm skid plates.
2. If applicable, chase the outer-most hole in the control arm with a 5/16" drill bit. Rust, dirt, and debris can gather here making it difficult to install the bolt.



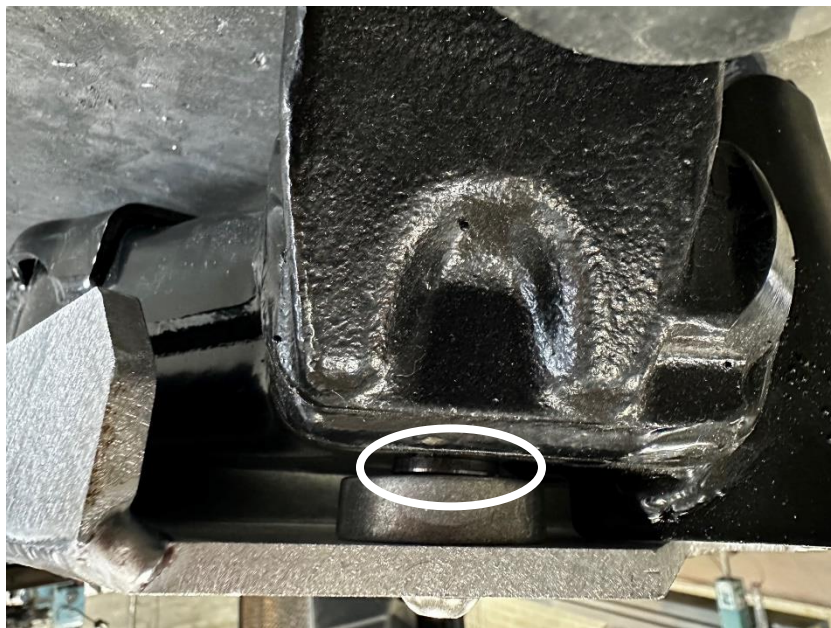
3. Gather the control arm skid plate and half of the hardware supplied. Shown is the passenger side.



- Starting with the 4" long 3/8" bolt (the shorter of the two), install it upwards into the front hole (closest to front bumper), and loosely install the washer and nylock nut on top of the control arm with a 3/8" spacer between the control arm and the skid plate.



- Next, install the smaller 5/16" bolt in the smaller hole closest to the wheel. For the KDSS model specifically, an additional washer (supplied) is required above the spacer, between the skid plate and the control arm, as shown below. Again, loosely install the washer and nylock nut on top of the control arm.





6. Lastly, install the 4" long 3/8" bolt through the rear-most hole in the control arm skid plate with a 3/8" spacer between the skid plate and the control arm. Install the washer and nylock nut on top of the control arm.



7. With each of the 3 bolts installed, tighten them evenly until each is hand-tight, and the control arm skid plate is fixed in position.



8. Torque the two 3/8" bolts to 100 in-lb (8.3 ft-lb) and torque the 5/16" bolt to 90 in-lb (7.5 ft-lb).
9. Repeat the same process for the opposite side.



INSTALL COMPLETE