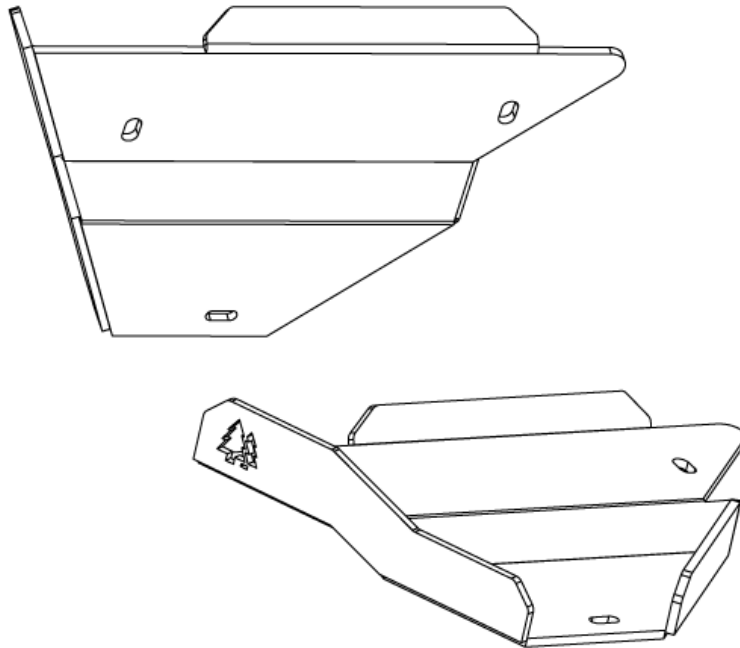




4RUNNER LOWER CONTROL ARM SKID PLATE

INSTALLATION INSTRUCTIONS

APPLICATION: 2010+ TOYOTA 4RUNNER



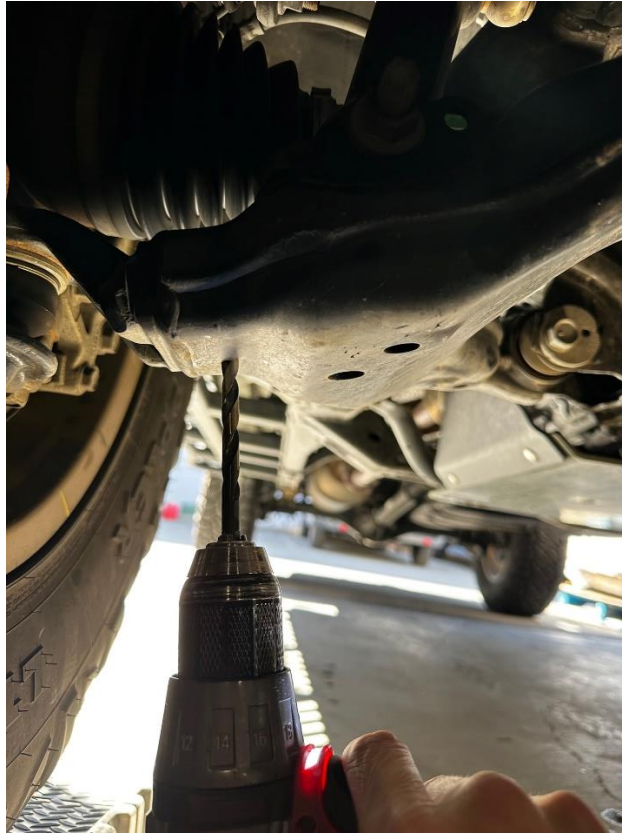
PARTS LIST	
4RUNNER CONTROL ARM SKID PLATES	2
3/8" SPACERS	6
4.5" LONG 3/8" BOLT	2
3" LONG 3/8" BOLT	2
3.5" LONG 5/16" BOLT	2
3/8" WASHER	4
5/16" WASHER	2
3/8" NYLON-INSERT LOCKNUT	4
5/16" NYLON-INSERT LOCKNUT	2

TOOLS REQUIRED
1/2" WRENCH
9/16" WRENCH
3/16" ALLEN KEY
7/32" ALLEN KEY
ANTI-SEIZE/GREASE

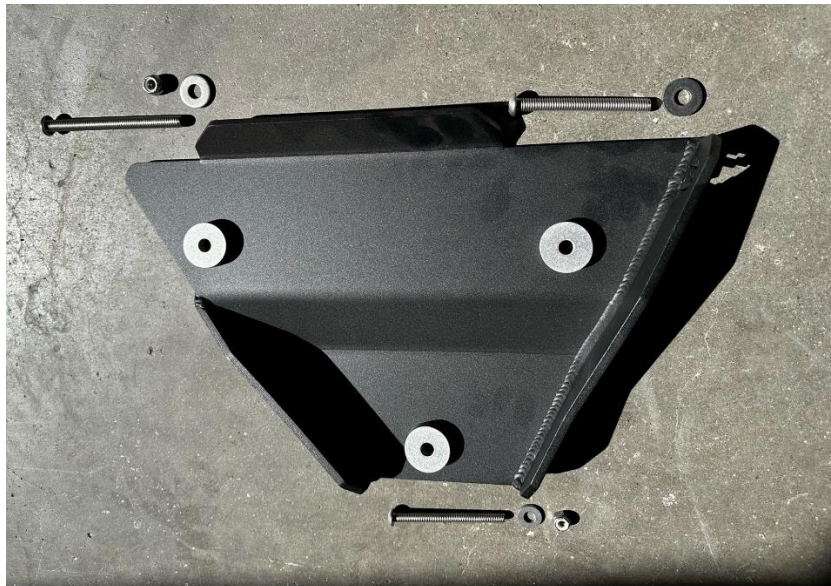
GENERAL TORQUE SPECS		
THREAD SIZE	BOLT HEAD SIZE	TORQUE
6mm	10mm	8 ft/lb
8mm	12 or 13 mm	18 ft/lb
10mm	17mm	23 ft/lb
12mm	19mm	50 ft/lb
14mm	22mm	90 ft/lb
1/4 in	7/16 in	12 ft/lb
5/16 in	1/2 in	19 ft/lb
3/8 in	9/16 in	23 ft/lb
1/2 in	3/4 in	90 ft/lb

Installation Instructions

1. Apply anti-seize to the 3 bolts supplied with the control arm skid plates.
2. Chase the outer-most hole in the control arm with a 5/16" drill bit. Rust, dirt, and debris can gather here making it difficult to install the bolt.



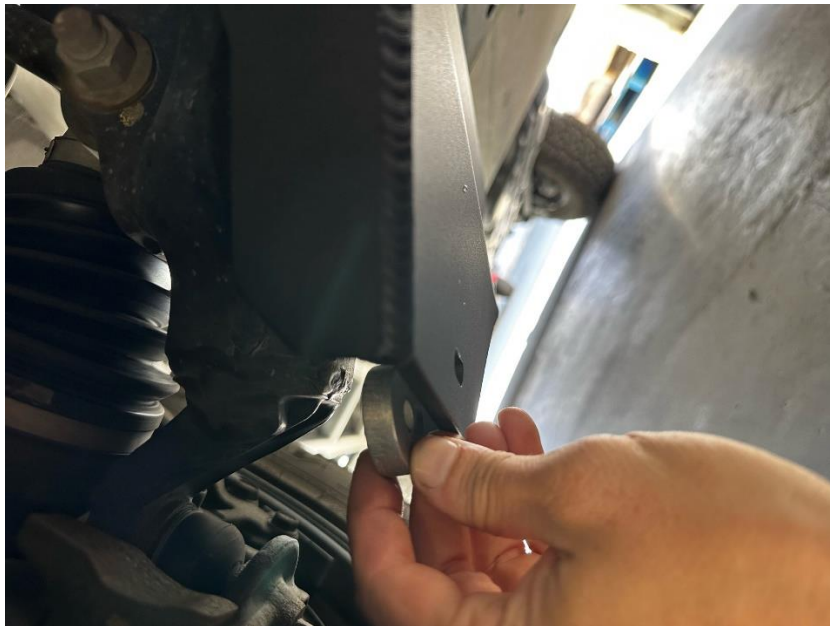
3. Gather one of the skid plates and half of the hardware. Passenger side shown.



4. Starting with the 3" long 3/8" bolt, install it upwards into the front hole (closest to front bumper) with a 3/8" spacer between the skid plate and the control arm. Loosely install the washer and nylock nut on top of the control arm.



5. Next install the smaller 5/16" bolt in the smaller hole closest to the wheel with a 3/8" spacer between the skid plate and the control arm. Again, loosely install the washer and nylock nut on top of the control arm.



6. Lastly, install the 4" long 3/8" bolt through the rear-most hole with a 3/8" spacer between the skid plate and the control arm. Loosely install the washer and nylock nut on top of the control arm.



7. With each of the 3 bolts installed, tighten them evenly until each is hand-tight, and the control arm skid plate is fixed in position.
8. Torque the two 3/8" bolts to 100 in-lb (8.3 ft-lb) and torque the 5/16" bolt to 90 in-lb (7.5 ft-lb).
9. Repeat the same process for the opposite side.



INSTALL COMPLETE